

DT395CR Rugged Tablet

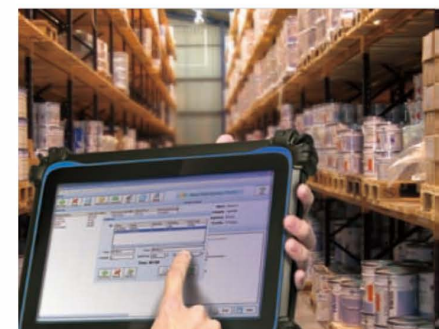
Rugged, multi-functional computing for outdoor usage



The DT395CR Rugged Tablet features the integration of a 8.9" touch screen and a high performance, energy-efficient Intel® Atom™ quad core processor within a slim, lightweight, durable package. With Wi-Fi and Bluetooth connection as well as options for camera, barcode scanner, 4G, and I/O ports, this robust tablet is designed for seamless information capture and transmission for improved workflow. Rated IP65 and MIL-STD-810G, the DT395CR Rugged Tablet provides reliable operation in harsh, mission-critical environments.

Features

- 8.9" Full-HD screen with capacitive touch
- Support for Microsoft® Windows® 10 IoT Enterprise or Android 5.1 operating systems
- Intel® Atom™ quad core processor; high performance with low power consumption
- IP65-rated for water and dust resistance
- Rated MIL-STD-810G for shock and vibration protection
- Optional camera and 2D barcode scanner
- Optional Ethernet and COM ports
- Optional 4G module



Applications

- Inventory/ Warehousing
- Manufacturing
- Retail
- Healthcare
- Education

Specifications

System

CPU	Intel® Atom™ Quad Core, 1.44 GHz (up to 1.84 GHz)
RAM	4 GB
Storage	64 GB to 128 GB
Operating System	Microsoft® Windows® 10 IoT Enterprise or Android 5.1
Display	8.9" LED-backlight screen with capacitive touch; anti-reflection outdoor viewable
Display Resolution	1920 x 1200
Control Switch and Buttons	1 power button, 1 trigger button, 1 brightness control button and 1 up/down button for the volume
Indicator	1 display mode LED and 1 battery status LED
Speaker	1.5 W built-in speaker
SD Card Slot	1 microSD card slot

Network Interface

WLAN	Wi-Fi 802.11ac
Bluetooth	Bluetooth 4.0

I/O Ports

USB Port	1 USB 2.0
Headset Jack	1 (3.5 mm)
DC-in	1

Mechanical and Environmental

AC/DC Adapter	Input: 100 – 240 VAC; Output: 19 VDC, 3.42 A
Battery Pack	Internal 3.6 V, 8800 mAh
Enclosure	ABS + PC plastics
Bumpers	Rubber bumpers on each corner for handling protection
Dimensions (H x W x D)	7.7 x 10 x 1.3 in/ 196 x 256 x 33.5 mm
Weight	2.87 lbs/ 1.3 kg
Water and Dust Resistance	IP65
Shock and Vibration Protection	MIL-STD-810G
Regulatory	FCC Class B, CE, RoHS compliant
Temperature	Operation: 14 °F to 122 °F (-10 °C to 50 °C)
	Storage: -4 °F to 140 °F (-20 °C to 60 °C)
Humidity	0 – 90 % non-condensing

* Specifications subject to change without notice.

Major Options

Cameras

5 megapixel back camera with auto focus, white balance, gain control and exposure control

Barcode Scanner

2D barcode scanner; reads 1D also

4G Module

4G / LTE European version module

I/O Port Module

Ethernet and COM ports (with 6-pin lockable connector)

Accessories

The DT395CR has a suite of customized accessories to meet numerous deployment needs.

- Desktop Charging Cradle
- Wall/ Vehicle Mount Cradle



- Built-in Stand



- External Battery Pouch w/ Charger



- External Battery 73 Wh



Technische Änderungen und Irrtum ohne Vorankündigung vorbehalten! Alle Rechte geschützt!

WETIF
industrie edv

WETIF Industrie EDV
Senserstrasse 3
D - 82140 Olching

Telefon +49 8142 448976-0
Telefax +49 8142 448976-4
Mobil +49 172 817 44 11

Email info@wetif.com
Internet www.wetif.com