

# MTK-02 (Desktop Docking Station) Quick Guide

## GETTING STARTED

MTK-02 is a desktop docking station with 1-slot battery charger which is designed for the MRC84 MRC84e Series of Tablet PC. This quick guide takes you through the procedures required to get the terminal and Docking Station ready for operation.

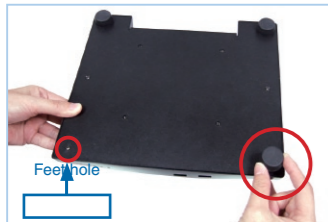
### Check List

MTK-02 package should have all the items listed in the following table.

- 1x MTK-02
- 1x MTK-02 Quick Guide
- 1x MTK-02 CD Driver
- 2x Rubber Feet (Front)
- 1x Battery-Rubber

### Operating MRC Series with Desktop Docking Station

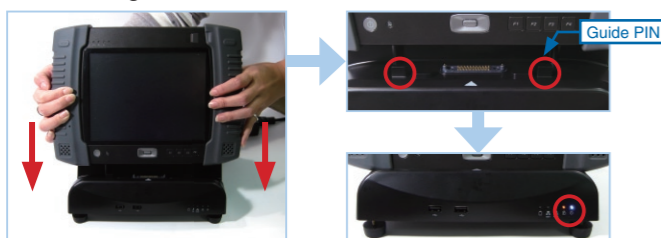
1. Assemble the rubber feet on the bottom of the system.



2. Connecting the MRC Series adapter to the MTK-02.

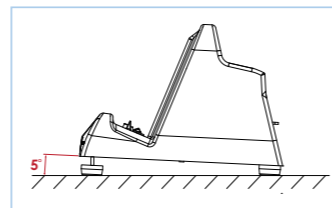


3. Place the terminal on the MTK-02 as shown below. When connection has been successfully established the Power indicator lights turns blue and Plug-in indicator turns orange.

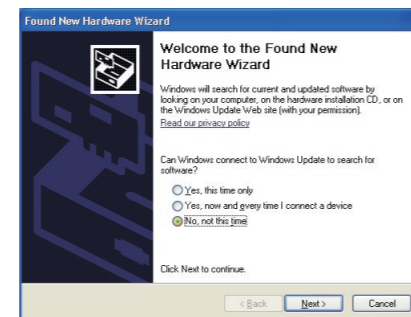


4. Adjusting the docking stations feet to the best viewing angle.

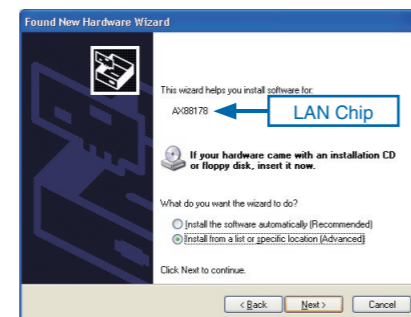
**Note: The adjusted rubber feet enable a 5° adjustment of the elevation angle.**



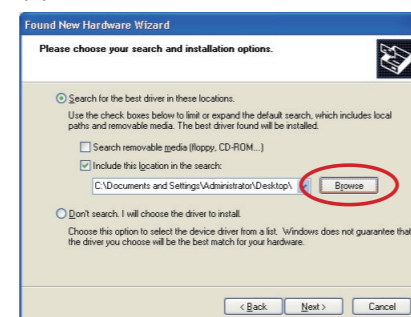
5. MRC series shows when a new device has been detected. The first time that the Tablet PC has been connected to MTK-02 you will see the following on screen messages (1) please insert CD driver to install MTK-02 driver.



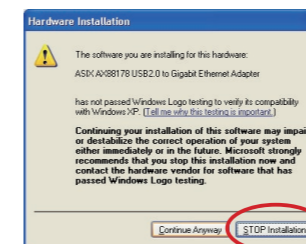
(2) Please make sure the device name is "AX88178", then select "Install from a list or specific location (Advanced)", and then click "Next".



(3) Click Browse to select the driver location, go to next step.

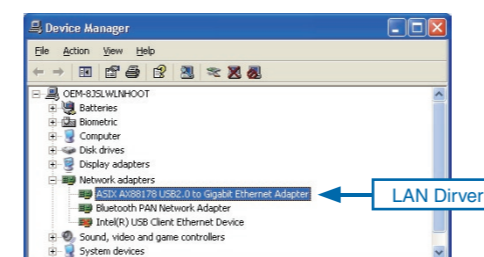


(4) Click "Continue Anyway" and the system will start to install the driver.



(5) When the setup complete, click "Finish".

6. Go to the device manager to ensure MTK-02 driver has been installed.



7. Now, you can charge battery and use Giga Ethernet by MTK-02.

### Installing Battery Pack in Battery Charger

1. Insert a MRC battery into the Battery Charger in the rear side of docking station so that the battery contacts align with the contacts in the Battery Charger.



2. When the battery is charging, the battery charger indicator light will glitter orange.



3. When the battery is fully charged, the indicator light will turn off.



**Note: while battery charger is not occupied, please put the rubber cover on it to avoid dust.**



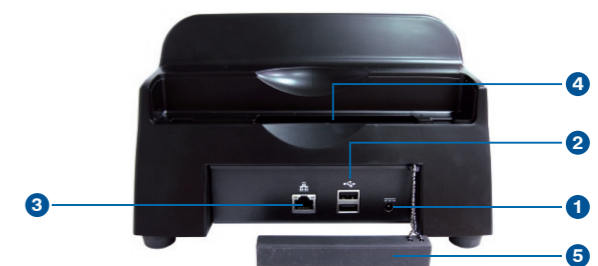
### Take a look at the MTK-02

#### MTK-02 Front View



NO.	I/O	Descriptions
1	USB port	2 x USB2.0
2	Docking Connector	1x32-Pin Po Go connector
3	Guide Pin	For guiding terminal into the Docking Station.
4	LED Indicators (from right to left)	<ul style="list-style-type: none"> <li>⏻ Indicate Power status(Solid Blue)</li> <li>🔌 Indicate Plug-in status(Solid Orange)</li> <li>🌐 Indicate LAN Link status (Solid Green)</li> <li>📶 Indicate LAN Access status (Glittered Yellow)</li> <li>🔋 Indicate Battery charger (Yellow)</li> </ul>

#### MTK-02 Rear View



NO.	I/O	Descriptions
1	Power Connector	DC-in 19V / 3.42A (65W)
2	USB port	2 x USB2.0
3	Giga LAN port	1 x 10/100/1000 base-T port
4	Battery Charger	1x slot for MRC series battery pack
5	Battery Cover	Rubber cover for dust protection

### Ordering Information

#### MTK-02

Desktop Docking Station with USB/GigaLAN/Battery Charger