







# Mobile Tablet CMOS Camera

## Installation

The CMOS Camera is preinstalled as an option for WebDT 312/ 362.

## Button Management

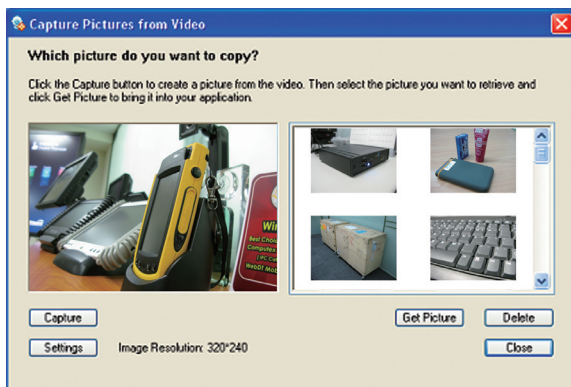
To assign Camera Trigger button, follow the procedures below.

1. Start **Button Manager** by clicking on  in the system tray.
2. Click on  to go to the second screen of **Button Manager**.
3. Select an available unused button marked with the icon .
4. Click on the  icon to assign the **Camera Trigger** to the unused button.
5. Click **OK** to apply configuration settings and close the window.



## To Test CMOS Camera Module

To test the CMOS Camera, launch **Microsoft® Paint** from **Start | All Programs | Accessories**. Select **File | From Scanner or Camera** to initiate the **Capture Pictures from Video** window.



▶ Click **Settings** to decide properties of captured pictures.

▶ Click on **Capture** button or pre-assigned trigger button to take a picture.

Select a captured picture on right column, click **Get Picture** to export the picture to **Paint** or click **Delete** to delete the picture.

## SPECIFICATIONS

<b>Sensor</b>	UXGA resolution image sensor
<b>Resolution</b>	640 x 480 (default), 1280 x 1024, 1600 x 1200, 2048 x 1536
<b>LED indicator</b>	Yes
<b>Auto focus</b>	Yes
<b>Automatic image control</b>	Automatic Exposure Control Automatic white Balance Control
<b>Focusing type</b>	Auto Focus
<b>Focus Distance</b>	Focal on 60cm
<b>Interface</b>	High speed USB 2.0
<b>Regulatory</b>	RoHS compliant

Note: Specifications are subject to change without notice.



WETIF Industrie EDV  
Senserstraße 3  
D - 82140 Olching

Telefon DE +49 8142 448976-0  
Telefon AT +43 664 28 68 223  
[info@wetif.com](mailto:info@wetif.com) [www.wetif.com](http://www.wetif.com)

Techn. Änderungen ohne Vorankündigung und Irrtum vorbehalten. Alle Rechte geschützt.