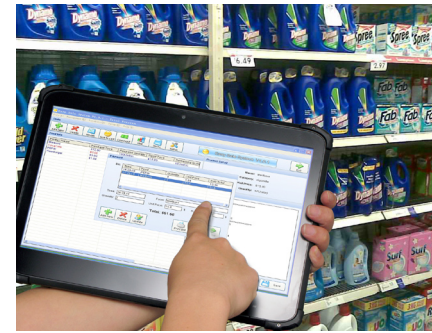


# Industrial Tablets: DT313C/ DT313H

## Rugged, Multi-functional for Point-of-Service and Sales Applications



The DT Research Mobile POS Tablets feature the integration of brilliant 13.3" capacitive touch screens and high performance yet energy-efficient Intel® Celeron™ or Core™ i7 processors within slim, light, and durable packages. With built-in smart card reader, Wi-Fi and Bluetooth as well as options for 2D barcode scanner, magnetic stripe reader, NFC/RFID reader and camera modules, these tablets are ideal for point-of-service/sales applications, and offer seamless information capture for instant transmission on the sales floor, in the restaurant and in the warehouse.

### Features

- 13.3" LED-backlight screen with capacitive touch
- Intel® Celeron™ or Core™ i7 processor; high performance with low power consumption
- Support for Microsoft® Windows® operating system
- IP-rated front panel
- Built-in full-slot smart card reader
- Optional camera, NFC/RFID reader, magnetic stripe reader, and 2D barcode scanner
- Optional 3G WWAN module or 4G LTE module

### Applications

- Inventory/ Warehousing
- Control/ Monitoring
- Manufacturing
- Finance
- Hospitality
- Retail
- Healthcare
- Education

## Specifications



**DT313C**



**DT313H**

<b>Model</b>	<b>DT313C</b>	<b>DT313H</b>
<b>System</b>		
<b>CPU</b>	Intel® Celeron® 3955U, dual core 2.0 GHz	Intel® Core™ i7 5500U, dual core up to 3.0 GHz
<b>RAM</b>	4 GB	8 GB
<b>Storage</b>	128 GB to 256 GB flash	128 GB to 512 GB flash
<b>Operating System</b>	Windows® 7 Professional or Windows® 10 IoT Enterprise or Android 8.0	Windows® 7 Professional or Windows® 10 IoT Enterprise
<b>Display</b>	13.3" LED-backlight screen with capacitive touch	
<b>Display Resolution</b>	1920 x 1080	
<b>Control Switch and Buttons</b>	1 power button, 1 programmable button and 1 Wi-Fi switch	
<b>Indicator</b>	1 power/ battery status LED	
<b>Microphone</b>	Built-in microphone with DSP for video conference call	
<b>Speaker</b>	Built-in speaker	
<b>Network Interface</b>		
<b>WLAN</b>	Wi-Fi 802.11ac, 2.4 GHz + 5 GHz dual band	
<b>Bluetooth</b>	Bluetooth 4.0 LE	
<b>I/O Ports</b>		
<b>USB Port</b>	USB 3.0 X 1	
<b>Headset Jack</b>	2	
<b>DC-in</b>	1	
<b>SD Slot</b>	1 full size SD card slot	
<b>Smart Card Reader</b>	Full-slot, reads ISO 7816 T=0, T=1; 1.8/3/5 V smart card	
<b>Mechanical and Environmental</b>		
<b>Fan/ Fanless</b>	Fan	
<b>AC/DC Adapter</b>	Input: 100 – 240 VAC; Output: 19 VDC, 3.42 A	
<b>Battery Pack</b>	Internal 14.8 V, 1880 mAh/ Optional: External 14.8 V, 1850 mAh	
<b>Enclosure</b>	ABS + PC plastics	
<b>Protective Bumpers</b>	Rubber bumpers on each corner with handstrap for handling protection	
<b>Dimensions (H x W x D)</b>	8.5 x 13.5 x 0.75 in/ 216 x 344 x 18.9 mm	
<b>Weight</b>	3.15 lbs/ 1.43 kg	
<b>Water and Dust Resistance</b>	IP54 front panel	
<b>Shock and Vibration</b>	MIL-STD-810G	
<b>Regulatory</b>	FCC Class B, CE, RoHS compliant	
<b>Temperature</b>	Operation: 0 °C - 40 °C; Storage: -20°C – 60°C	
<b>Humidity</b>	0% – 90% non-condensing	
<b>Major Options</b>		
<b>Magnetic Stripe Reader</b>	N/A	
<b>Barcode Scanner (2D)</b>	2D barcode scanner; reads 1D also	
<b>Camera</b>	2 megapixel front camera and 5 megapixel back camera	
<b>EMV® Chip-and-Signature Card Reader</b>	N/A	
<b>NFC/RFID Reader</b>	Complies with HF 13.56MHz, ISO standard 15693, 14443A(B) & 18000-3 mode-1	
<b>Mobile Broadband</b>	3G WWAN module or 4G LTE/AWS module	

\* Specifications subject to change without notice.

Technische Änderungen und Irrtum ohne Vorankündigung vorbehalten! Alle Rechte geschützt!



WETIF Industrie EDV  
 Sensorstrasse 3  
 D - 82140 Olching

Telefon +49 8142 448976-0  
 Telefax +49 8142 448976-4  
 Mobil +49 172 817 44 11

Email [info@wetif.com](mailto:info@wetif.com)  
 Internet [www.wetif.com](http://www.wetif.com)