

RT104-E

10.4" Full Rugged Windows Pad



Functionality and durability.
A powerful combination.

- IP65, MIL-STD-810G, 6 feet drop resistance
- Sunlight readable display
- 10-point capacitive multi-touch screen
- 802.11 ac, optional 3.5G or 4G LTE
- NFC/GNSS built-in
- Up to 9 hours of battery life
- A number of snap-on modules for data capture
- Windows 8 and Windows 7 support
- Compact vehicle dock with wide range voltage power

I/O Diagram



Specification

CPU

- Intel® Atom E3827 1.75GHz dual-core processor (Bay Trail)

Memory

- 4GB DDRIII SO-DIMM

Storage

- mSATA SSD 64GB (option for 128GB / 256GB)

Display

- 10.4-inch XGA (1024 x 768) LED backlight, 700 nits
- 10-point capacitive multi-touch

RF

- 3.5G or 4G LTE (option)
- Wi-Fi 802.11 ac/a/b/g/n
- Bluetooth v4.0
- GNSS (GPS/GLONASS/BeiDou by request)

Data Collection

- 2MP front camera
- 5MP rear camera w/ auto focus and LED flash
- NFC
- MSR (option)
- 2D Barcode(option)
- Smart card reader(CAC) + GPS 2-in-1 module (option)

Control Button

- Power, Lock, RF, Windows button
- Programmable button x 2

Security

- TPM 1.2

Sensor

- G sensor, light sensor

Power Adapter

- AC 100V-240V, 50-60Hz input; 19VDC@3.42A, 65W

Battery

- Internal smart lithium polymer battery, 3800mAh, 7.4V
- Optional external battery pack, 4200mAh

I/O Interface

- USB 2.0 type A x 1, USB 3.0 x 1
- Micro SIM x 1
- Audio Jack (Headphone/Microphone combo) x 1
- Speaker x 1
- Ethernet x 1 (via Mini USB to RJ-45 adapter)

Dimensions and Weight

- 27.5 x 20.4 x 2.7 cm (10.8" x 8" x 1.1")
- 2.65 lbs (1.2kg)

Certifications

- CE, FCC, CB, CCC

OS

- Win8.1 Industry Pro., WES7-WS7P, Win7 Pro. (Embedded)

Rugged Features

- IP65, MIL-STD-810G, 6 feet drop

Environment

- Operating temperature : -20°C to +50°C
- Storage temperature : -30°C to +70°C
- Humidity : 5-95% without condensation

Accessory



Desktop Dock



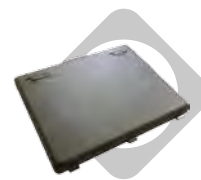
Vehicle Dock



Hand Strap



Battery Charger



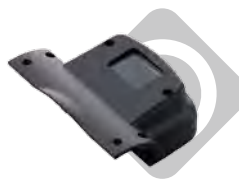
External Battery



Smart Card Reader(CAC)
+ GPS



MSR



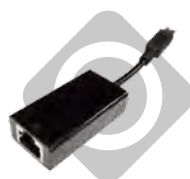
Barcode Reader



Stylus



Shoulder Strap



Ethernet Adapter



Car Adapter



WETIF Industrie EDV
Senserstraße 3
D - 82140 Olching

Telefon DE +49 8142 448976-1
Telefax DE +49 8142 448976-4
Internet www.WETIF.com

Telefon AT +43 664 2868223
Telefax AT +43 662 998799411
eMail info@wetif.com